



# Aperto Networks

■ ■ Product Overview

# Product Strategy

Standards	IEEE 802.16-2004; IEEE 802.16-2005
Frequency	2.x GHz, 3.x GHz, 5.x GHz
Base Stations	Macro, Micro, and Pico
Subscriber Units	Outdoor, Indoor, PC Card, USB Dongle
Radios	SISO, MIMO, Beam Forming
Management	Element Managing System

WiMAX Bands												
	700 MHz	2.3-2.4 GHz	2.5-2.7 GHz	2.7-2.9 GHz	3.3-3.4 GHz	3.4-3.6 GHz	3.65-3.7 GHz	3.6-3.8 GHz	4.9-4.0 GHz	5.1-5.3 GHz	5.4-5.7 GHz	5.7-5.7 GHz
PM 5000					d	d	d	d	e	e	e	e
PM 4000					e	e	e	e				
PM 3000					e	e	e	e	e	e	e	e
PM 2000					e	e	e	e				
PM 120					e	e	e	e	e	e	e	e
PM 320					e	e	e	e	e	e	e	e
PM 400					e	e	e	e				
PM 500					e	e						
PM 600					e	e						
PM 700					e	e						



d



d,e



e

# PacketMAX: Taking Wireless to the MAX

We start with



Then add

- Patented Link Management
- +
- Quality of Service
- +
- Advanced Networking Features
- +
- Carrier-Grade Features
- +
- Provisioning & Management
- +
- Solution Flexibility

The result:

**PacketMAX<sup>®</sup>**

**Taking Wireless to the MAX**

# PacketMAX Base Stations



**PM 3000**




**PM 5000**



**PM 4000**



**PM 2000**

Description	Micro 1U Stackable	Macro 5U ATCA Chassis	Micro 2U Stackable	Pico
Indoor Unit	Single Sector	1 to 12 Sectors	1 to 4 Sectors	Single Sector
Bands	3.3-3.7 GHz, 5.15-5.925 GHz		2.3-2.4 GHz 2.5-2.7 GHz 3.3-3.8 GHz	
WiMAX Standards	16d →		← 16e →	
Management	Common Element Management System			

# PacketMAX Subscriber Units

## Mobile WiMAX and Advanced Services

- Outdoor Gateway
- Indoor Gateway
- Voice Services Gateway



## Mobile WiMAX PC Adapters

- USB dongle
- PC, PC Express

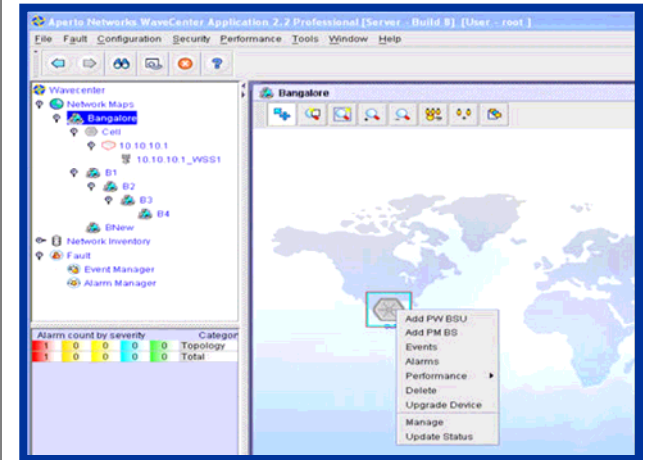
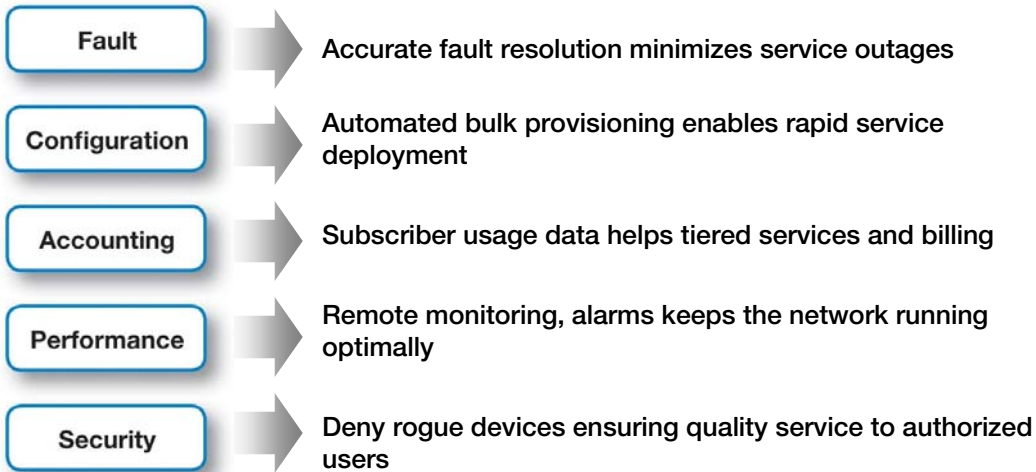


## Fixed WiMAX Outdoor Gateways

- Consumer/SoHo
- Business/Enterprise



# Network and Service Management



- Aperto **WaveCenter EMS Pro**—one platform for managing both 16d and 16e elements
- Northbound interface (NBI) using SOAP/XML and CORBA for rapid, low-cost integration
- Use existing business and operational support systems for service provisioning and management
- Scalable platform and full FCAPS functionality to extract the maximum potential of PacketMAX

# Thank You

## Aperto Sales Contacts

**South Asia and India**  
Ashish Malik  
[amalik@apertonet.com](mailto:amalik@apertonet.com)

**Asia Pacific**  
Bill Waters  
[bwaters@apertonet.com](mailto:bwaters@apertonet.com)

**Middle East & Africa**  
Ayman Al Saffan  
[aalsafan@apertonet.com](mailto:aalsafan@apertonet.com)

**Central/Latin America**  
Gus Basualdo  
[gbasualdo@apertonet.com](mailto:gbasualdo@apertonet.com)

**Western Europe**  
Enrique Martinez  
[emartinez@apertonet.com](mailto:emartinez@apertonet.com)

**Eastern Europe**  
Rudiger Meisenburg  
[rmeisenburg@apertonet.com](mailto:rmeisenburg@apertonet.com)

**North America**  
Bill Waters  
[bwaters@apertonet.com](mailto:bwaters@apertonet.com)

### **Corporate Headquarters:**

Aperto Networks  
598 Gibraltar Drive,  
Milpitas, California 95035  
USA

Phone: +1.408.719.9977

Fax: +1.408.719.9970

### **India Development Center:**

Aperto Networks India Pvt Ltd  
Raheja Arcade No.1,  
Koramangala Industrial  
Layout Koramangala,  
Bangalore 560 095  
India

Phone: +91.80.4017.4300

Fax: +91.80.4017.4400